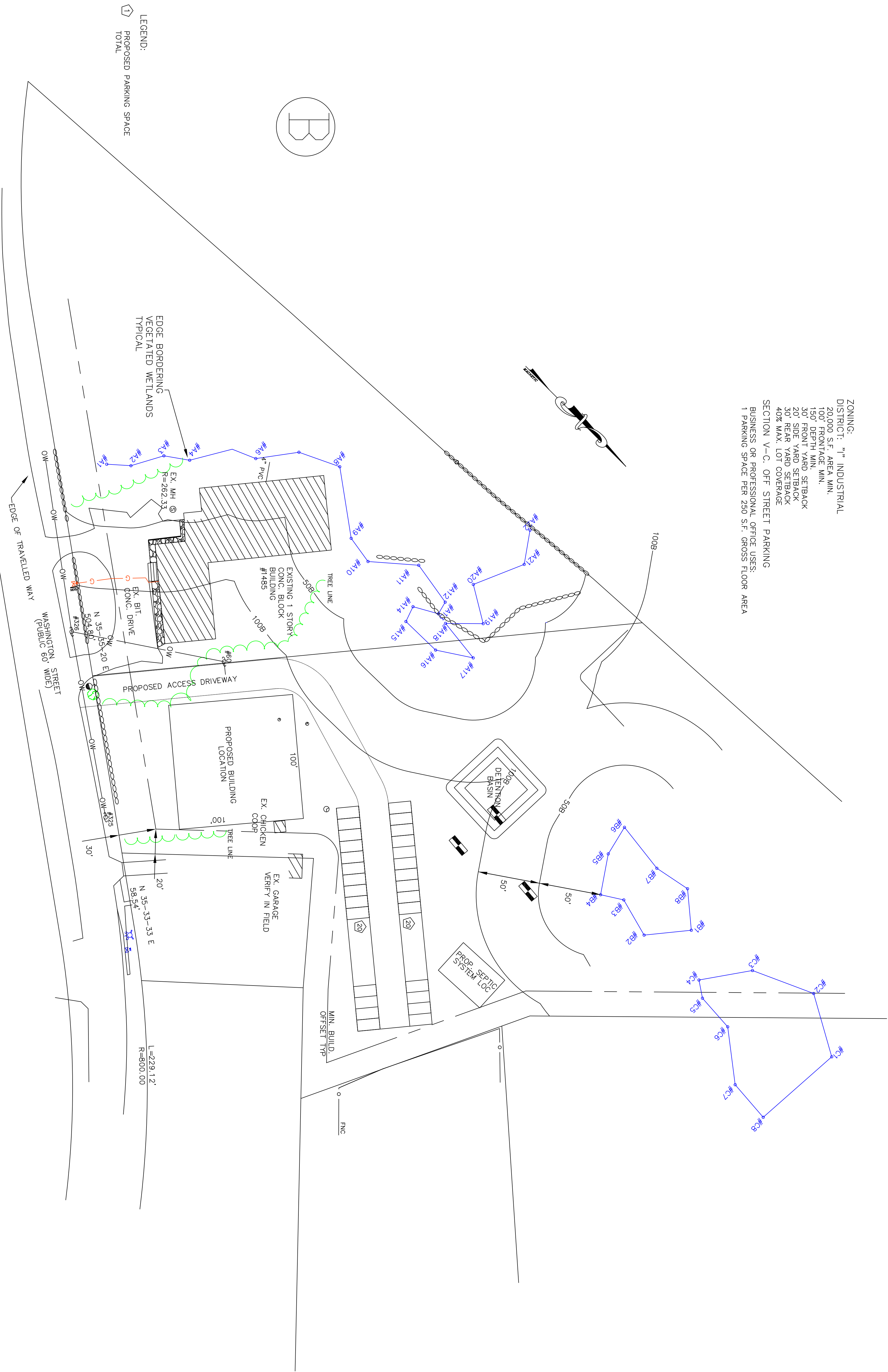


ZONING: "I" INDUSTRIAL  
DISTRICT: 20,000 S.F. AREA MIN.  
100' FRONTAGE MIN.  
150' DEPTH MIN.  
30' FRONT YARD SETBACK  
20' SIDE YARD SETBACK  
30' REAR YARD SETBACK  
40% MAX. LOT COVERAGE  
SECTION V-C, OFF STREET PARKING  
BUSINESS OR PROFESSIONAL OFFICE USES:  
1 PARKING SPACE PER 250 S.F. GROSS FLOOR AREA



SKETCH PLAN OF LAND SITE LOCATION: 1485 WASHINGTON STREET HOLLISTON MA		J.D. MARQUEDANT & ASSOCIATES INC. LAND SURVEYING 6 WALCOTT STREET HOPKINTON MA PHONE: 508-435-4145		
CONCEPT PLAN				
PREPARED FOR: PAUL CHAMPNEY 1485 WASHINGTON STREET HOLLISTON MA		SCALE: 1"=40'	DATE: OCT. 22, 2019	DRAWN BY:
				CHECKED BY:

JOB NO. 6105